

Segezha Anthracite

Grey is the color of new opportunities



segezha
group

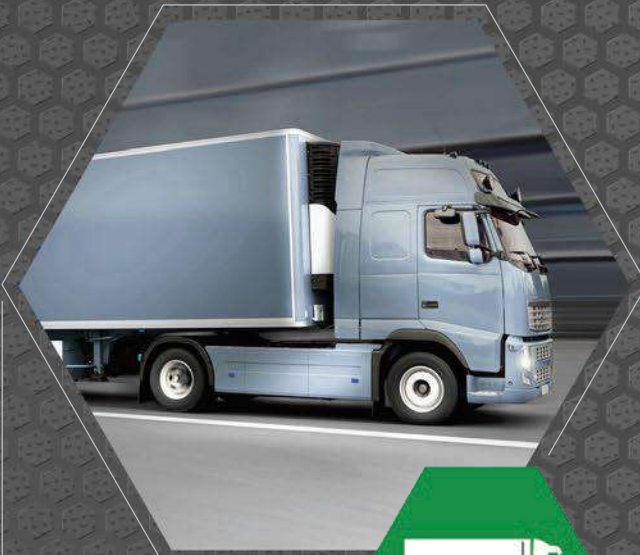
Segezha Anthracite usage in the transport segment

Segezha Anthracite

Flooring and interior design of vehicles

Segezha Anthracite with its relief surface is ideal for flooring in commercial vehicles, as well as warehouses, children's, sports and concert venues.

Segezha Anthracite with its smooth surface is used for the manufacture of elements of interior bodywork, as well as for decoration of rooms.



Truck transport



Light commercial vehicles



Passenger transport



Application opportunities

Segezha Anthracite

Segezha Anthracite



Segezha Anthracite SMOOTH

Wear-proof coating

- 2 Walls
- 3 Doors
- 4 Partitions
- 5 Ceiling
- 6 Benches
- 7 Shelves
- 9 Pullout drawers
- 10 Tool boxes



Segezha Anthracite WIRE/HEXA

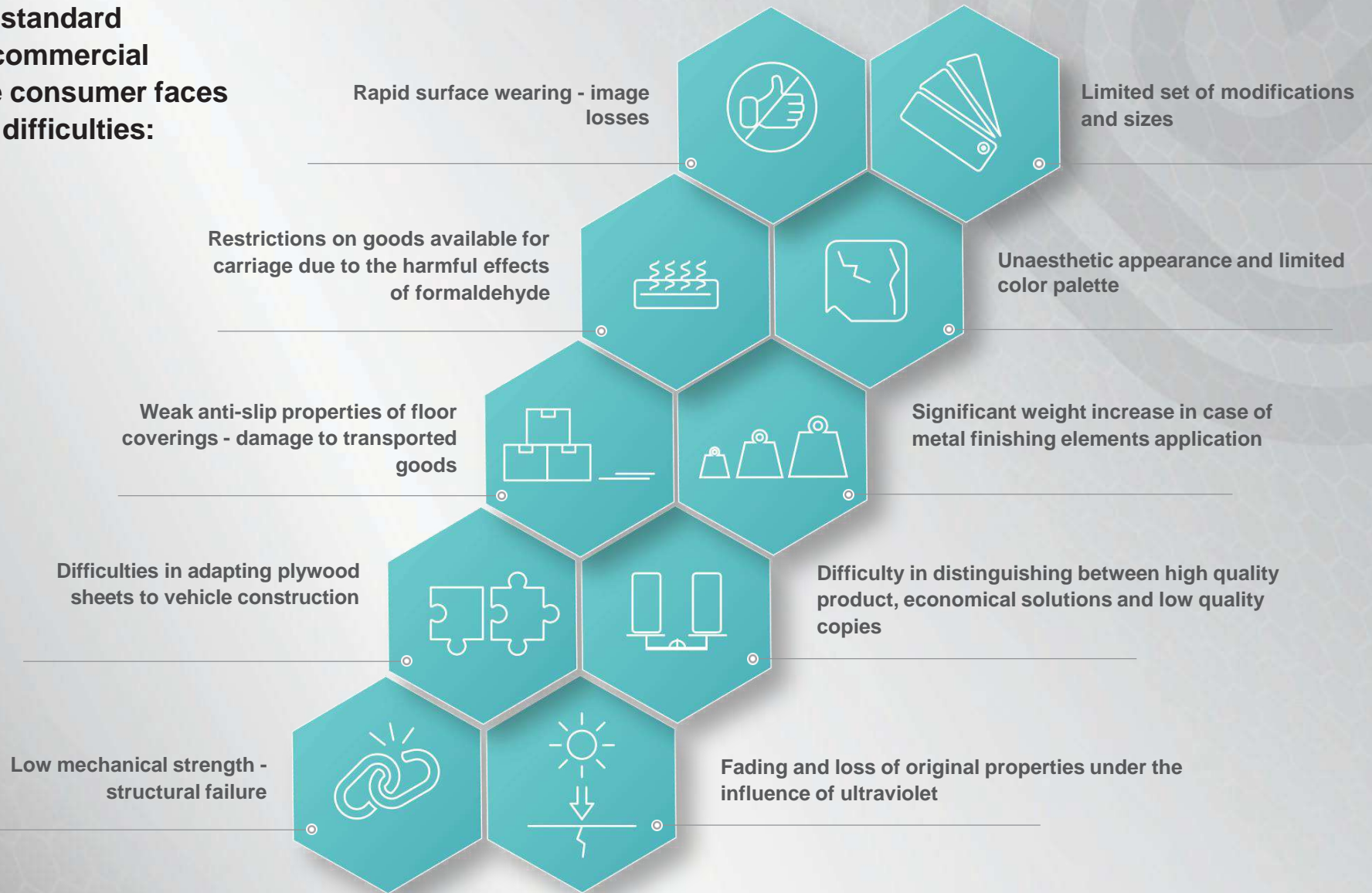
Anti-skid coating

- 1 Floor
- 8 Ramp



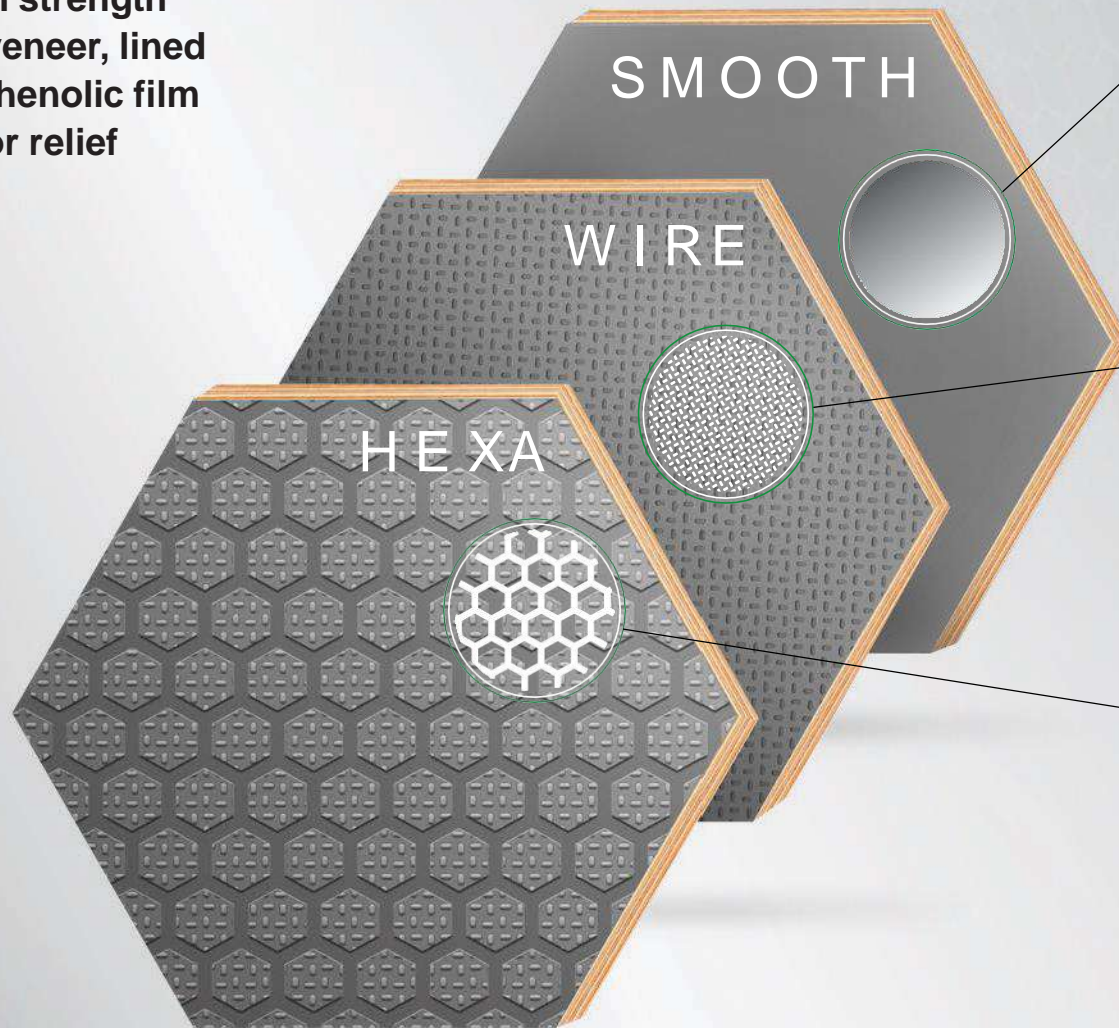
Consumer Problems

When using standard coatings in commercial vehicles, the consumer faces a number of difficulties:



About the product

Plywood of high strength selected birch veneer, lined with modified phenolic film with a smooth or relief coating.



Segezha Anthracite

SMOOTH

Texture

smooth/smooth

Color, type of coating
grey, phenolic coating

Density

120/220 g/m²

WIRE

Texture

smooth/wire

Color, type of coating
grey, phenolic coating

Density

120/220 g/m²

HEXA

Texture

smooth/hexa

Color, type of coating
grey, phenolic coating

Density

120/220 g/m²

Features

Segezha Anthracite

Sheet size, ft - mm	4×8×4 5×10 4×10 5×8	1220×2440×1220 1250×2500×1250 1500×3000, 1525×3000 1220/1250×3000/3050 1500/1525×2400/2440/2500
Sheet width, mm	<input checked="" type="radio"/>	6 - 40
Surface type	<input checked="" type="radio"/>	hexa/smooth, wire/smooth, smooth/smooth
Film type	<input checked="" type="radio"/>	Phenolic modified
Film density, g/m ²	<input checked="" type="radio"/>	120/220
Wear resistance by Taber-test, turns	<input checked="" type="radio"/>	360 - 740*
Formaldehyde emission class	<input checked="" type="radio"/>	E1
Glue category	<input checked="" type="radio"/>	WBP
Plywood humidity, %	<input checked="" type="radio"/>	≤12
Plywood density, kg/m ³	<input checked="" type="radio"/>	650-730
Warranty shelf life, years	<input checked="" type="radio"/>	5

*depending on the film density (120-220 g/m²)



Key advantages

Segezha Anthracite



Optimal combination of price and quality



Excellent anti-slip properties (WIRE, HEXA)



50% lower water absorption*



Increased resistance to alkalis



Excellent ornamental properties

Certificates



FPC confirmed according to EN 13986



www.fsc.org
FSC-C084688



CARB

TS 5513-002-93222532-2016

ISO 14001:2015 ISO 9001:2015 OHSAS 18001:2007



High resistance to abrasion



High quality birch veneer



3 times less formaldehyde emission*



Color stability and resistance to UV rays

*compared to standard phenolic films

Tel.: +7 (499) 962 82 00 / www.segezha-group.com

Consumer profit

Segezha Anthracite



Minimization of complaints and quality claims during the warranty period



Compliance of plywood components with the high quality level of the end product. No reputation losses



Alternative, aesthetic color scheme



Minimizing the risk of cargo damage during transportation



More environmentally friendly solution - adds value to the end product



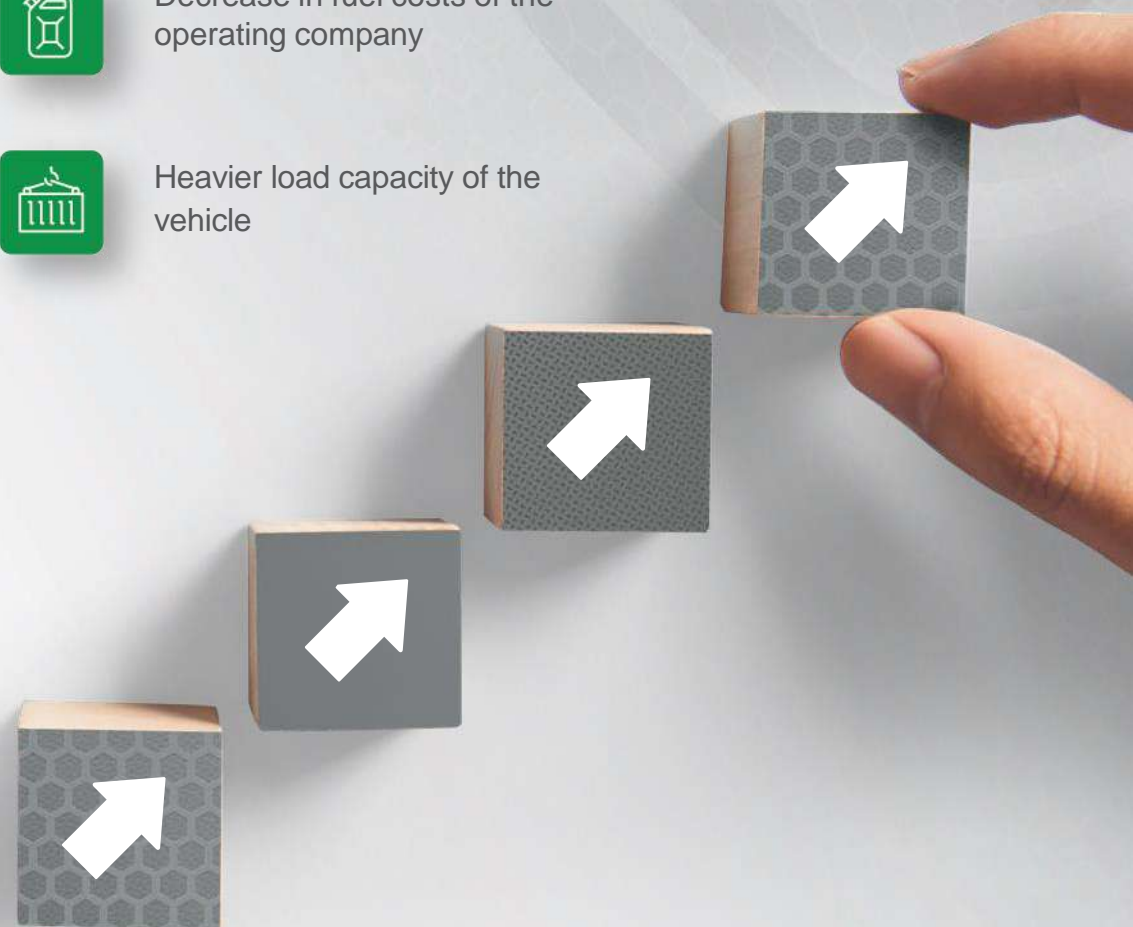
Increasing the profitability or price attractiveness of the final product



Decrease in fuel costs of the operating company



Heavier load capacity of the vehicle



Ability to stand out

Distance from low quality products

Segezha Anthracite

The rich grey color allows distinguishing the product Segezha Anthracite among widespread and low quality solutions for transport. The end customer gets the opportunity to distance themselves from competitors and create additional value for the products

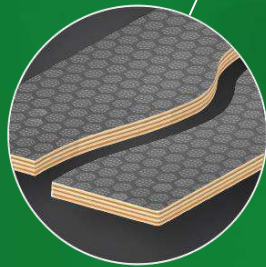


Customer service

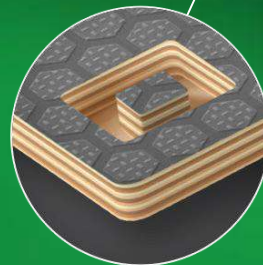
Segezha Anthracite

- Digital software control allows cutting plywood sheets in exact accordance with specified parameters.
- The client receives an adapted set of sheets from plywood, ready to be assembled into a single structure.

Cutting according to customer's designs



Milling



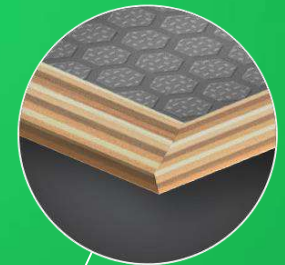
Logo application



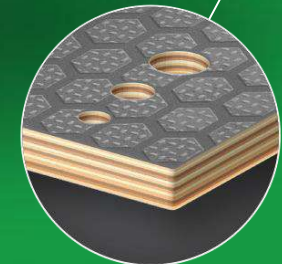
Tenon and mortise joints



Chamfering



Drilling



Cutting and CNC-processing according to customer's designs allows to adapt the finished product to individual customer projects.



About the company



✓ The largest public investment holding company in Russia

✓ A unique set of assets in various promising sectors of the Russian economy

✓ Investments and competencies in more than 15 industries

KEY FIGURES FOR 2019

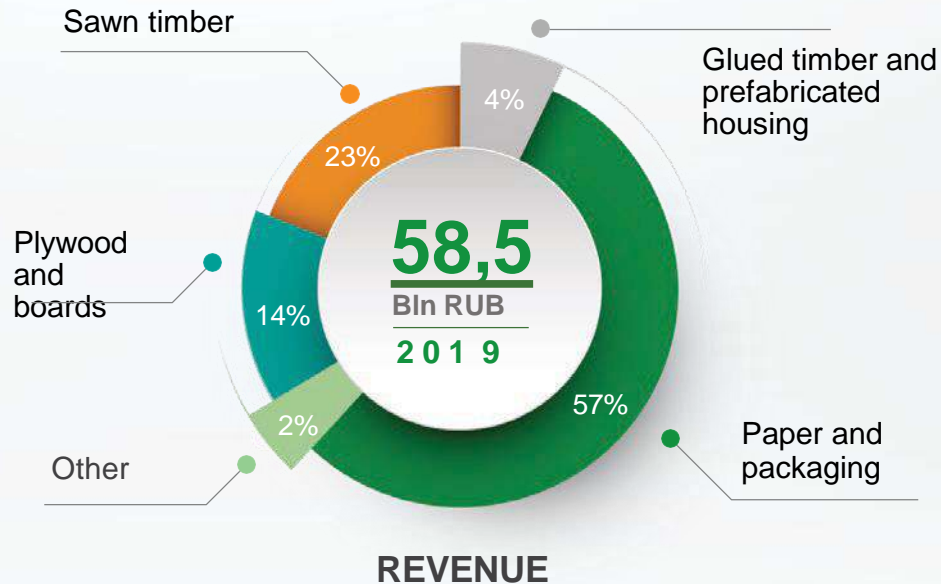


KEY ASSETS

	#1 Russian telecom operator and digital services provider
	Russia's leading vertically integrated timber holding company
	A large agricultural holding company and one of the largest owners of land assets in Russia
	Development, property rent
	Leading private medical network in Russia
	Venture capital and private investment funds

A leading international wood and paper holding company

Segezha Group



100 countries
Sales geography

No1 No2
In Russia in Europe
by volume of paper sacks production

No3
worldwide
by volume of kraft paper production

No5
worldwide
by volume production of large-size birch plywood

No1
In Russia
by production volume of sawn timber and glued timber prefabricated housing

RAW MATERIAL SAFETY

4 908,9 mln m³
In-house logging

86%
FSC certified (%)

> 70% of needs are covered by the Company's own logging facilities

Global reach

Segezha Group

REGIONAL REP AND SALES OFFICES



Sales offices



Production of paper bags



Wood processing plant



Pulp and paper mills



Plywood production



Innovation centres



CLT plant



Sustainable production

Segezha Group



REFORESTATION AREA



86% of Segezha Group's rental base is certified according to FSC international standards.



Segezha Group performs reforestation on 100% of territories



Production waste is disposed of and used for the production of pellets and briquettes



The Company conducts specialized fire protection measures on the entire leased territory



Through 2014-2018, Segezha Group built more than 2000 km of roads that can be used by local residents, as well as fire-fighting equipment



Plywood and slabs of Segezha Group

Segezha Group

№5 in the world

for the production of
large-size birch plywood



>50 countries

sales territory

3
plants



98 thousand m³

Production capacity
KIROV PLYWOOD MILL (KPM)



93 thousand m³

Production capacity
VYATSKY PLYWOOD MILL (VPM)



125 thousand m³

Planned capacity
GALICH PLYWOOD MILL



! (launch in 2021)

Progress:



Modernization of the work
with raw materials with
installation of sorting line at
Vyatsky Plywood Mill



Improvement of the
response system to existing
and potential customers,
also including the Creatio
CRM system



Implementation of
the advanced
SAP HANA ERP
system



Creation and
development of R&D
laboratory for
development and testing
of new products in Kirov

Advantages of cooperation



in-house manufacturing
two production sites, state-of-the-art equipment

Segezha Group



compliance
consistent quality and compliance with stated characteristics



technical assistance
customer consultations and on-site visits



marketing assistance
provision of promotional materials and product samples



warehouse program
finished goods in stock, short production times



pricing policies
customer-centric pricing



quality
multi-stage quality control, acceptance of disputes



product portfolio
comprehensive product range



resources
own resource base



team
highly qualified staff



service
individual approach to orders and delivery anywhere in the world



certification
all necessary certificates. 86% of our forest stock is FSC certified



Logistics - all kinds of shipments

Segezha Group



Contacts

Office in Moscow
123112, Russia, Moscow,
Presnenskaya naberezhnaya 10, block C

☎ +7 (499) 962 82 00

✉ welcome@segezha-group.com

segezha-group.com

